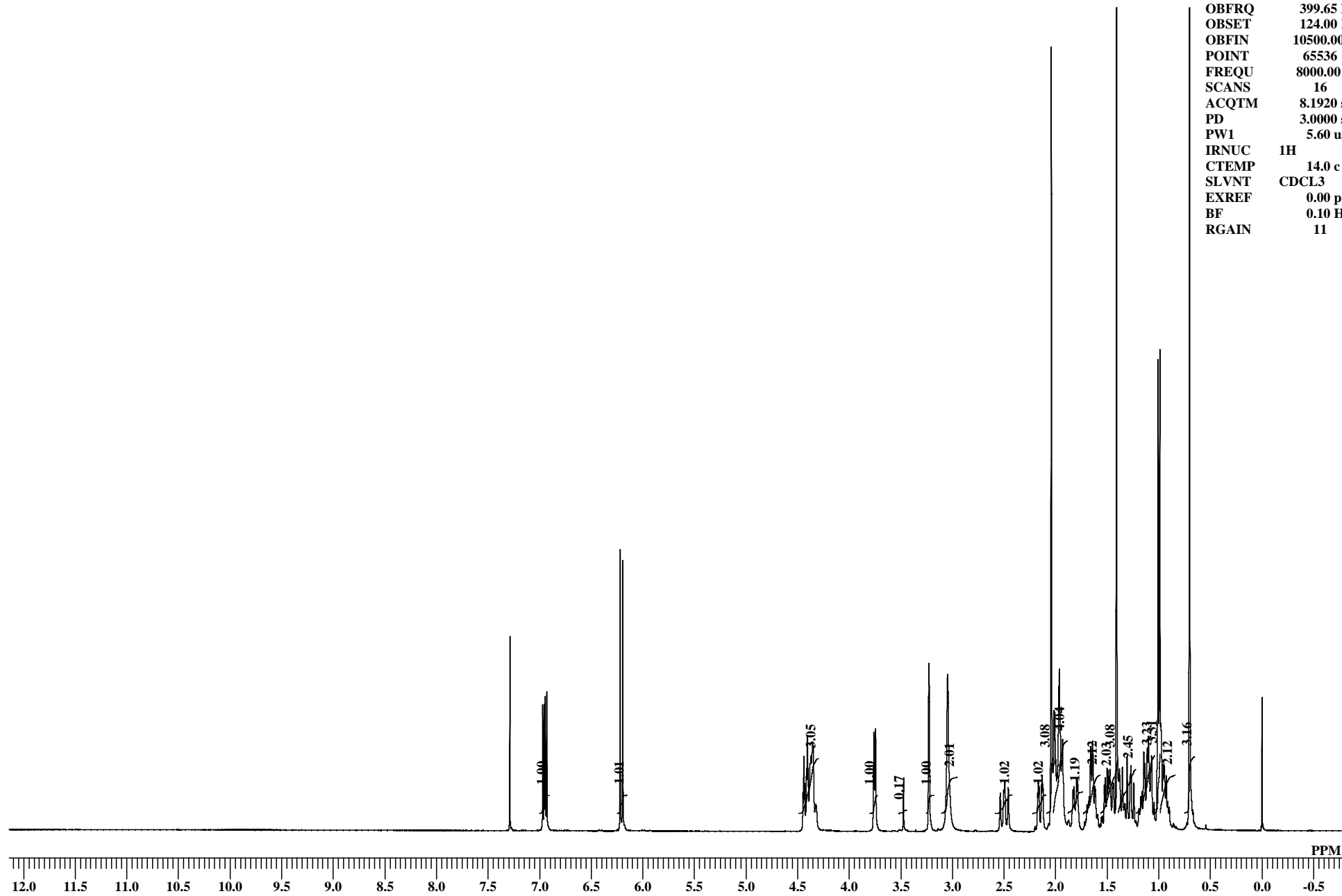


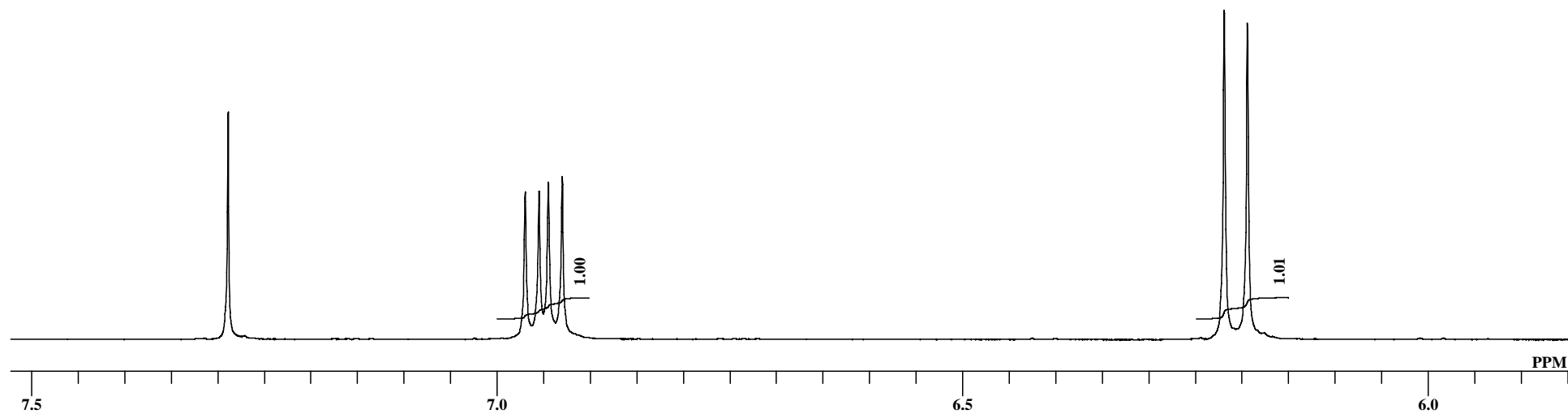
K V Natural Ingredients Pvt.Ltd  
Withaferin'A' 1HNMR CDCI3

OBNUC 1H  
EXMOD NON  
OBFRQ 399.65 MHz  
OBSET 124.00 KHz  
OBFIN 10500.00 Hz  
POINT 65536  
FREQU 8000.00 Hz  
SCANS 16  
ACQTM 8.1920 sec  
PD 3.0000 sec  
PW1 5.60 usec  
IRNUC 1H  
CTEMP 14.0 c  
SLVNT CDCL3  
EXREF 0.00 ppm  
BF 0.10 Hz  
RGAIN 11



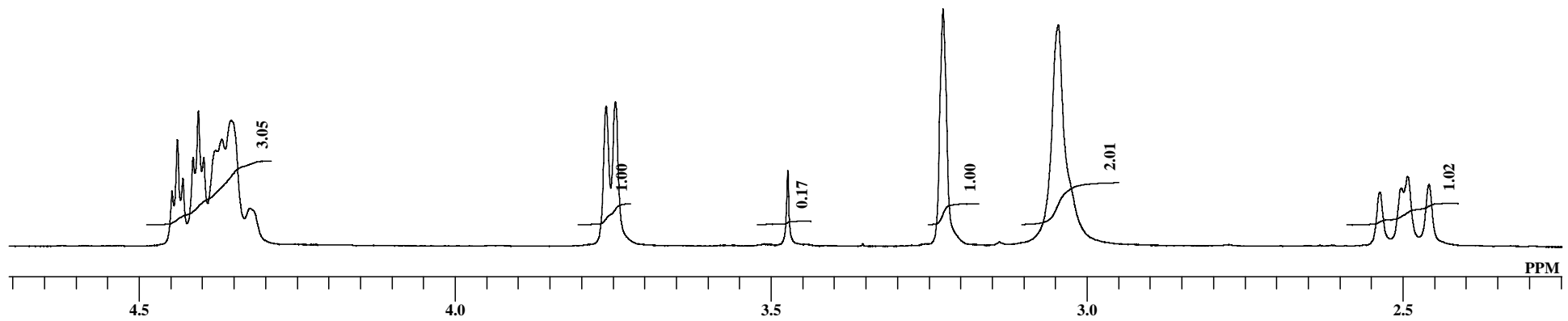
K V Natural Ingredients Pvt.Ltd  
Withaferin'A' 1HNMR CDCl3

OBNUC 1H  
EXMOD NON  
OBFRQ 399.65 MHz  
OBSET 124.00 KHz  
OBFIN 10500.00 Hz  
POINT 65536  
FREQU 8000.00 Hz  
SCANS 16  
ACQTM 8.1920 sec  
PD 3.0000 sec  
PW1 5.60 usec  
IRNUC 1H  
CTEMP 14.0 c  
SLVNT CDCL3  
EXREF 0.00 ppm  
BF 0.10 Hz  
RGAIN 11



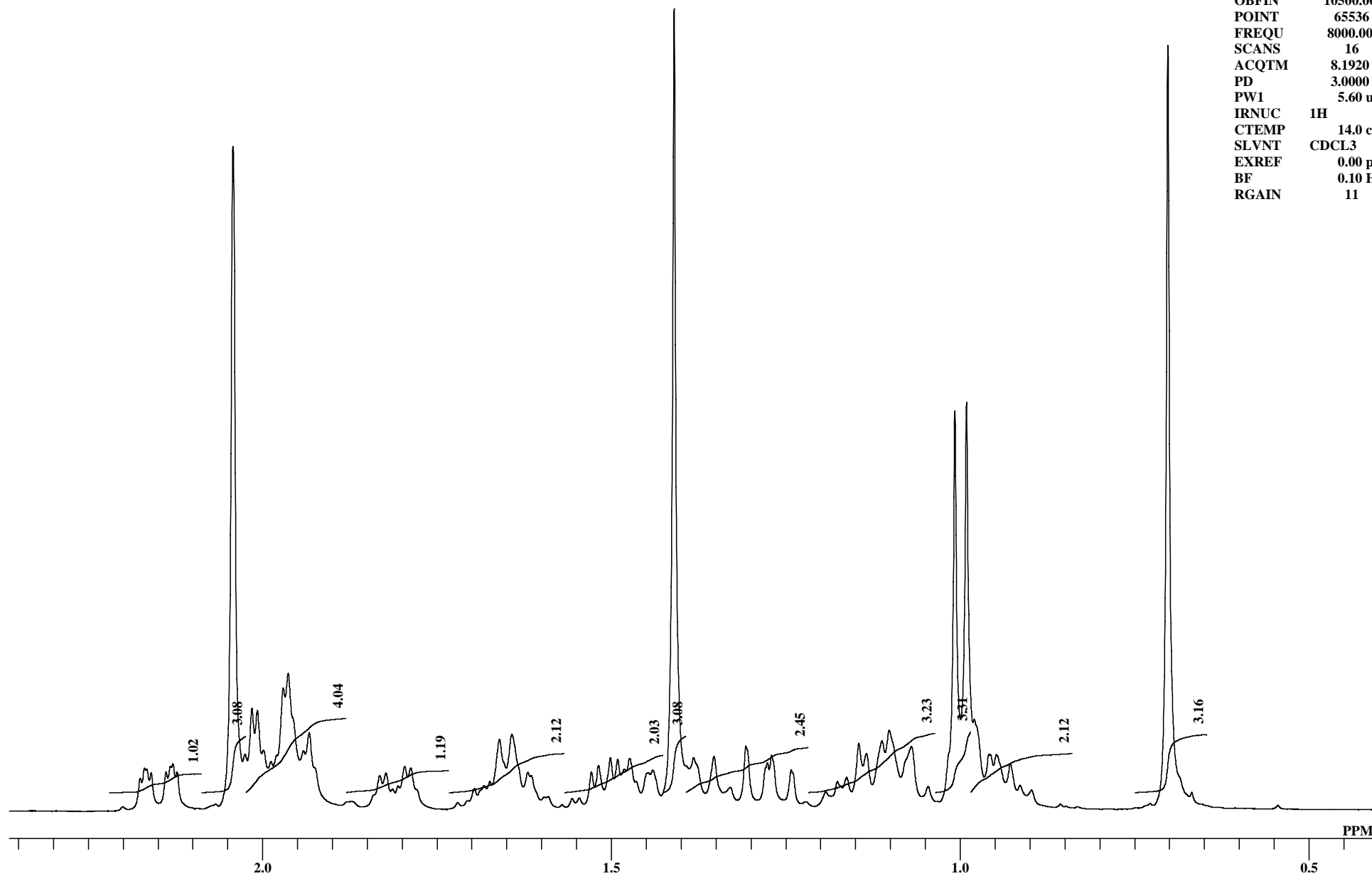
K V Natural Ingredients Pvt.Ltd  
Withaferin'A' 1HNMR CDCI3

OBNUC 1H  
EXMOD NON  
OBFRQ 399.65 MHz  
OBSET 124.00 KHz  
OBFIN 10500.00 Hz  
POINT 65536  
FREQU 8000.00 Hz  
SCANS 16  
ACQTM 8.1920 sec  
PD 3.0000 sec  
PW1 5.60 usec  
IRNUC 1H  
CTEMP 14.0 c  
SLVNT CDCL3  
EXREF 0.00 ppm  
BF 0.10 Hz  
RGAIN 11



K V Natural Ingredients Pvt.Ltd  
Withaferin'A' 1HNMR CDCl3

OBNUC 1H  
EXMOD NON  
OBFRQ 399.65 MHz  
OBSET 124.00 KHz  
OBFIN 10500.00 Hz  
POINT 65536  
FREQU 8000.00 Hz  
SCANS 16  
ACQTM 8.1920 sec  
PD 3.0000 sec  
PW1 5.60 usec  
IRNUC 1H  
CTEMP 14.0 c  
SLVNT CDCL3  
EXREF 0.00 ppm  
BF 0.10 Hz  
RGAIN 11



PEAK 91  
 MXINT 45.3853111  
 RESOL 0.1220703 HZ  
 RESOL 0.0003053 PPM  
 EXREF 0.0000000 PPM  
 OBS -8007.57 HZ  
 ABOBS 399784.5000000 KHZ  
 NGAIN 1

NO.	PPM	INT(%)	FREQU(HZ)	J(HZ)	POSITION	BAR GRAPH
1	6.97004	13.28693	2786.499	-----	26356	++
2	6.95508	13.34429	2780.518	5.981	26405	++
3	6.94531	14.13621	2776.611	3.906	26437	++
4	6.93034	14.64622	2770.630	5.981	26486	++
5	6.21920	29.70093	2486.328	284.302	28815	+++++
6	6.19416	28.49797	2476.318	10.010	28897	+++++
7	4.44822	4.00063	1778.320	697.998	34615	
8	4.43967	7.85219	1774.902	3.418	34643	+
9	4.43082	4.96706	1771.362	3.540	34672	
10	4.41494	6.53982	1765.015	6.348	34724	+
11	4.40639	10.02451	1761.597	3.418	34752	++
12	4.39784	6.52545	1758.179	3.418	34780	+
13	4.36914	7.88432	1746.704	11.475	34874	+
14	4.35448	9.31131	1740.845	5.859	34922	+
15	4.32425	2.71651	1728.760	12.085	35021	
16	3.76120	10.35680	1503.662	225.098	36865	++
17	3.74654	10.70109	1497.803	5.859	36913	++
18	3.47357	5.55899	1388.672	109.131	37807	+
19	3.22807	17.65620	1290.527	98.145	38611	+++
20	3.04578	16.47188	1217.651	72.876	39208	+++
21	2.53678	3.92831	1014.160	203.491	40875	
22	2.50258	4.24890	1000.488	13.672	40987	
23	2.49281	5.09657	996.582	3.906	41019	+
24	2.45922	4.51187	983.154	13.428	41129	
25	2.17526	3.95412	869.629	113.525	42059	
26	2.16915	5.21131	867.188	2.441	42079	+
27	2.15968	4.60146	863.403	3.784	42110	
28	2.13831	4.76266	854.858	8.545	42180	
29	2.12854	5.77512	850.952	3.906	42212	+
30	2.12243	4.76305	848.511	2.441	42232	
31	2.04243	82.80878	816.528	31.982	42494	+++++
32	2.02503	6.97045	809.570	6.958	42551	++
33	2.01526	12.65789	805.664	3.906	42583	++
34	2.00732	12.40883	802.490	3.174	42609	++
35	1.99877	7.44919	799.072	3.418	42637	+
36	1.98778	6.06047	794.678	4.395	42673	+
37	1.97037	15.23211	787.720	6.958	42730	+++
38	1.96335	17.01282	784.912	2.808	42753	+++
39	1.94136	7.38705	776.123	8.789	42825	+
40	1.93312	9.62613	772.827	3.296	42852	+
41	1.87419	1.05981	749.268	23.560	43045	
42	1.83205	4.28712	732.422	16.846	43183	
43	1.82320	4.58787	728.882	3.540	43212	
44	1.81373	2.61650	725.098	3.784	43243	
45	1.80579	2.98605	721.924	3.174	43269	
46	1.79633	5.42236	718.140	3.784	43300	+
47	1.78747	5.25000	714.600	3.540	43329	+
48	1.72030	0.89422	687.744	26.855	43549	
49	1.69648	2.64313	678.223	9.521	43627	
50	1.68243	3.03707	672.607	5.615	43673	
51	1.67419	3.57855	669.312	3.296	43700	
52	1.66045	8.81250	663.818	5.493	43745	+
53	1.64304	9.46188	656.860	6.958	43802	+
54	1.61984	4.67334	647.583	9.277	43878	
55	1.59053	1.64795	635.864	11.719	43974	
56	1.55633	1.40751	622.192	13.672	44086	
57	1.54656	1.47921	618.286	3.906	44118	
58	1.52885	4.75783	611.206	7.080	44176	
59	1.51846	5.55017	607.056	4.150	44210	+
60	1.50137	6.53173	600.220	6.836	44266	+
61	1.49129	6.30469	596.191	4.028	44299	+
62	1.47388	6.45523	589.233	6.958	44356	+
63	1.44763	4.65344	578.735	10.498	44442	
64	1.44060	4.98265	575.928	2.808	44465	
65	1.41007	100.00000	563.721	12.207	44565	+++++
66	1.38198	6.51751	552.490	11.230	44657	+
67	1.35327	6.68613	541.016	11.475	44751	+
68	1.32946	2.83464	531.494	9.521	44829	
69	1.30747	7.95382	522.705	8.789	44901	+
70	1.27663	5.92887	510.376	12.329	45002	+
71	1.27083	6.81573	508.057	2.319	45021	+
72	1.24244	5.01182	496.704	11.353	45114	+
73	1.22137	1.02568	488.281	8.423	45183	
74	1.19297	2.26480	476.929	11.353	45276	
75	1.17648	3.53354	470.337	6.592	45330	
76	1.16305	4.05855	464.966	5.371	45374	
77	1.14564	8.29280	458.008	6.958	45431	+
78	1.13465	7.04244	453.613	4.395	45467	+
79	1.11236	8.66580	444.702	8.911	45540	+
80	1.10198	9.95599	440.552	4.150	45574	+
81	1.06992	7.90376	427.734	12.817	45679	+
82	1.04641	2.92251	418.335	9.399	45756	
83	1.00793	49.77265	402.954	15.381	45882	+++++
84	0.99114	50.85323	396.240	6.714	45937	+++++

85	0.98015	11.30204	391.846	4.395	45973	++
86	0.95908	6.95796	383.423	8.423	46042	+
87	0.94839	6.90382	379.150	4.272	46077	+
88	0.92824	5.76245	371.094	8.057	46143	+
89	0.91450	3.06131	365.601	5.493	46188	
90	0.89832	2.44789	359.131	6.470	46241	
91	0.70259	95.48505	280.884	78.247	46882	+++++