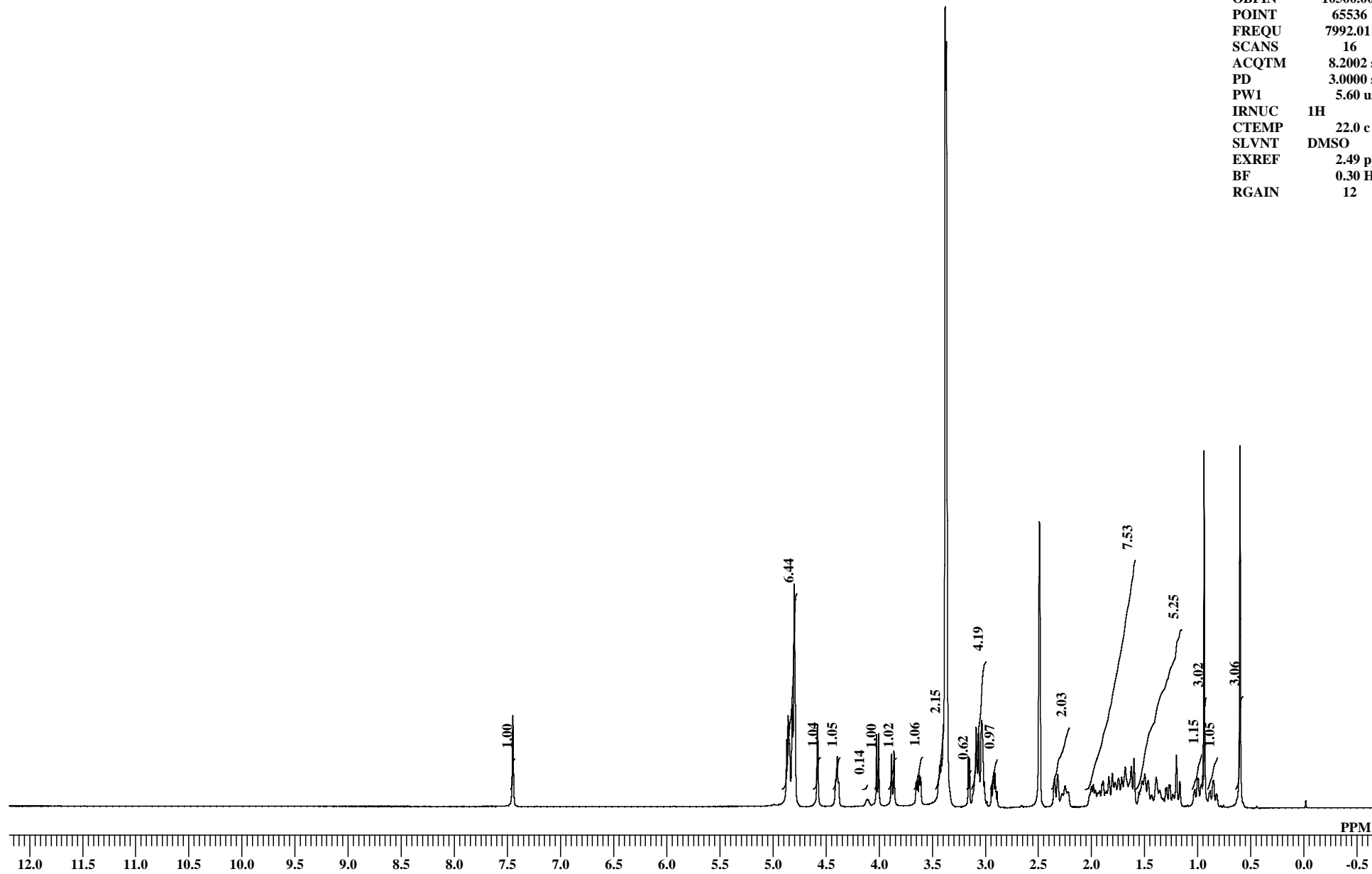
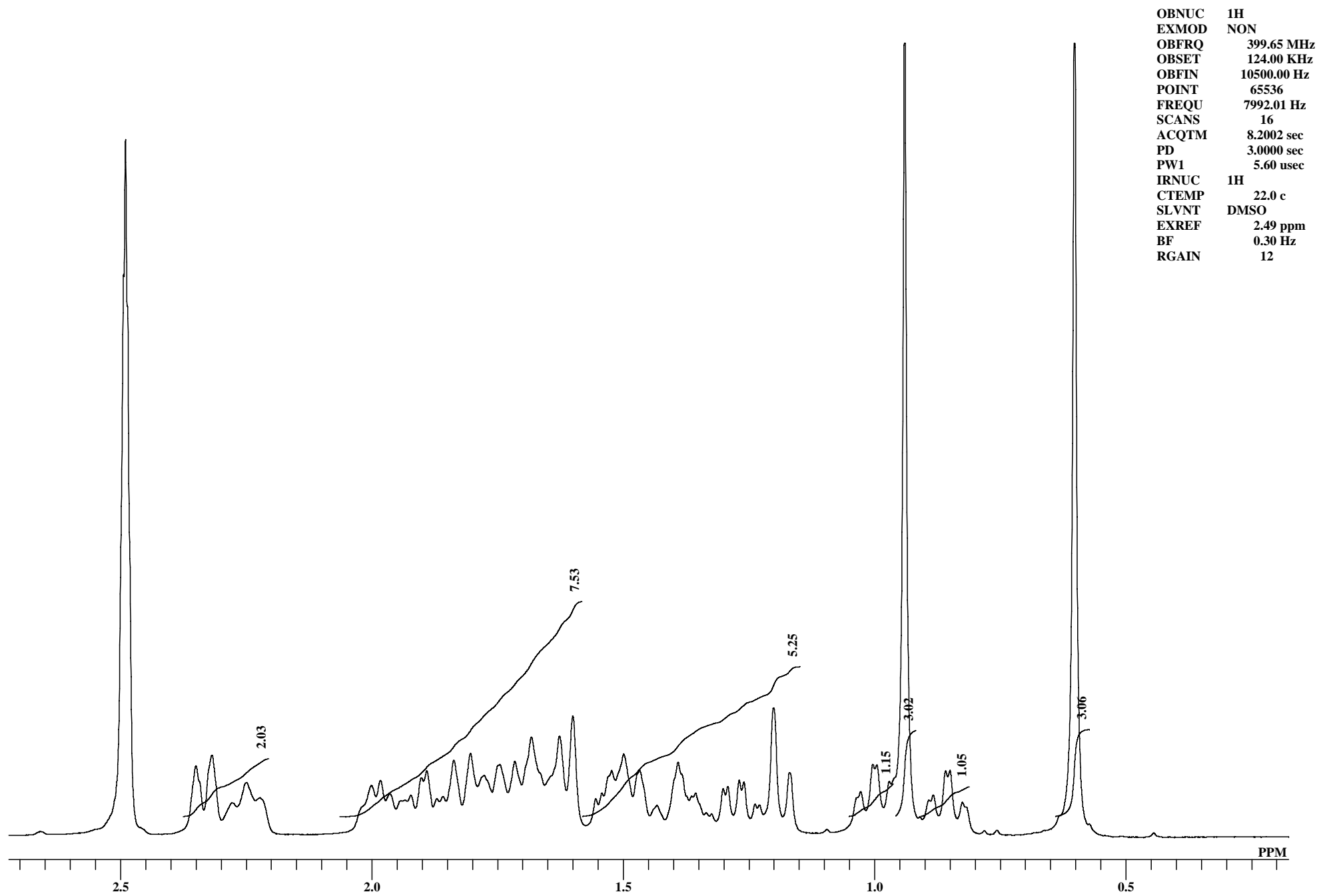


K V Natural Ingredients Pvt. Ltd
Neoandrographolide 1H NMR DMSO-D6

OBNUC 1H
EXMOD NON
OBFRQ 399.65 MHz
OBSET 124.00 KHz
OBFIN 10500.00 Hz
POINT 65536
FREQU 7992.01 Hz
SCANS 16
ACQTM 8.2002 sec
PD 3.0000 sec
PW1 5.60 usec
IRNUC 1H
CTEMP 22.0 c
SLVNT DMSO
EXREF 2.49 ppm
BF 0.30 Hz
RGAIN 12

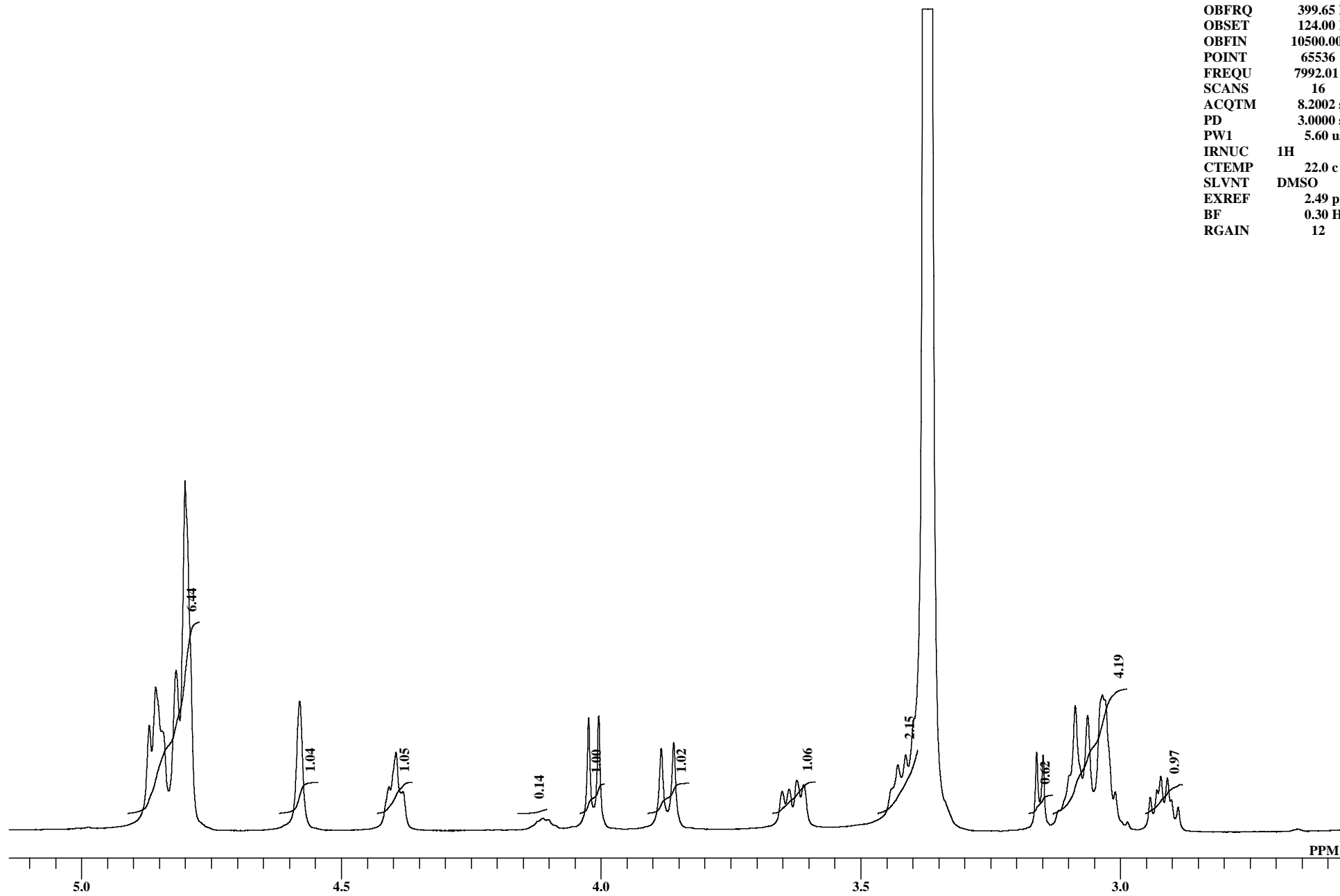




OBNUC 1H
EXMOD NON
OBFRQ 399.65 MHz
OBSET 124.00 KHz
OBFIN 10500.00 Hz
POINT 65536
FREQU 7992.01 Hz
SCANS 16
ACQTM 8.2002 sec
PD 3.0000 sec
PW1 5.60 usec
IRNUC 1H
CTEMP 22.0 c
SLVNT DMSO
EXREF 2.49 ppm
BF 0.30 Hz
RGAIN 12

K V Natural Ingredients Pvt. Ltd
Neoandrographolide 1H NMR DMSO-D6

OBNUC 1H
EXMOD NON
OBFRQ 399.65 MHz
OBSET 124.00 KHz
OBFIN 10500.00 Hz
POINT 65536
FREQU 7992.01 Hz
SCANS 16
ACQTM 8.2002 sec
PD 3.0000 sec
PW1 5.60 usec
IRNUC 1H
CTEMP 22.0 c
SLVNT DMSO
EXREF 2.49 ppm
BF 0.30 Hz
RGAIN 12



PEAK 70
 MXINT 28.8440037
 RESOL 0.1219484 HZ
 RESOL 0.0003050 PPM
 EXREF 2.4900000 PPM
 OBS -6983.12 HZ
 ABOBS 399784.5000000 KHZ
 NGAIN 1

NO.	PPM	INT(%)	FREQU(HZ)	J(HZ)	POSITION	BAR GRAPH
1	7.44929	25.20833	2978.095	-----	24676	+++++
2	4.86990	18.51714	1946.900	1031.195	33132	+++
3	4.85739	25.29411	1941.900	5.000	33173	+++++
4	4.81804	28.21604	1926.168	15.731	33302	+++++
5	4.80096	61.68211	1919.339	6.829	33358	+++++
6	4.58042	22.77427	1831.171	88.169	34081	++++
7	4.40807	7.67435	1762.270	68.901	34646	+
8	4.39495	13.78499	1757.026	5.244	34689	++
9	4.11158	2.09114	1643.736	113.290	35618	
10	4.02372	19.81969	1608.615	35.121	35906	+++
11	4.00451	20.17622	1600.932	7.683	35969	++++
12	3.88402	14.46412	1552.762	48.170	36364	++
13	3.85992	15.44863	1543.129	9.634	36443	+++
14	3.65097	6.83603	1459.594	83.535	37128	+
15	3.63785	7.24316	1454.350	5.244	37171	+
16	3.62291	8.77142	1448.375	5.975	37220	+
17	3.61010	8.05242	1443.253	5.122	37262	+
18	3.42829	11.56658	1370.572	72.681	37858	++
19	3.41365	13.29048	1364.718	5.854	37906	++
20	3.16108	13.74324	1263.745	100.973	38734	++
21	3.14857	13.27087	1258.745	5.000	38775	++
22	3.08696	21.99039	1234.111	24.634	38977	++++
23	3.06316	20.23458	1224.599	9.512	39055	++++
24	3.03449	23.90382	1213.136	11.463	39149	++++
25	2.94237	5.81672	1176.308	36.828	39451	+
26	2.92956	7.15753	1171.186	5.122	39493	+
27	2.92224	9.53629	1168.259	2.927	39517	+
28	2.90973	9.20846	1163.259	5.000	39558	+
29	2.88868	4.08190	1154.845	8.414	39627	
30	2.34999	7.68206	939.484	215.361	41393	+
31	2.31826	8.89803	926.801	12.683	41497	+
32	2.27830	3.47989	910.826	15.975	41628	
33	2.24872	5.77053	898.997	11.829	41725	+
34	2.00072	5.46443	799.853	99.144	42538	+
35	1.98303	6.03516	792.780	7.073	42596	+
36	1.96412	4.48117	785.219	7.561	42658	
37	1.92233	4.32741	768.513	16.707	42795	
38	1.89060	7.10817	755.830	12.683	42899	+
39	1.85888	4.18948	743.147	12.683	43003	
40	1.83692	8.33909	734.367	8.780	43075	+
41	1.80397	9.11939	721.197	13.170	43183	+
42	1.77652	6.58134	710.221	10.975	43273	+
43	1.74571	7.83657	697.904	12.317	43374	+
44	1.71582	8.17564	685.953	11.951	43472	+
45	1.68257	10.93629	672.661	13.292	43581	++
46	1.62675	11.08471	650.345	22.317	43764	++
47	1.60021	13.39146	639.735	10.610	43851	++
48	1.55476	3.93878	621.565	18.170	44000	
49	1.52303	7.14196	608.882	12.683	44104	+
50	1.49894	9.04490	599.248	9.634	44183	+
51	1.46721	7.15896	586.566	12.683	44287	+
52	1.43305	3.18056	572.907	13.658	44399	
53	1.39095	8.11562	556.078	16.829	44537	+
54	1.35618	4.58661	542.176	13.902	44651	
55	1.30158	5.09161	520.348	21.829	44830	+
56	1.29212	5.31463	516.567	3.780	44861	+
57	1.26924	6.06255	507.421	9.146	44936	+
58	1.26009	5.86505	503.763	3.658	44966	+
59	1.23752	3.30781	494.738	9.024	45040	
60	1.20122	14.29965	480.227	14.512	45159	++
61	1.16889	6.90490	467.300	12.927	45265	+
62	1.02765	4.75456	410.838	56.462	45728	
63	1.00356	7.83428	401.204	9.634	45807	+
64	0.99562	7.80336	398.033	3.171	45833	+
65	0.94011	98.61008	375.839	22.195	46015	+++++
66	0.88337	4.38137	353.156	22.682	46201	
67	0.85866	7.10926	343.279	9.878	46282	+
68	0.85012	7.16546	339.864	3.415	46310	+
69	0.82572	3.52497	330.108	9.756	46390	
70	0.60213	100.00000	240.720	89.388	47123	+++++