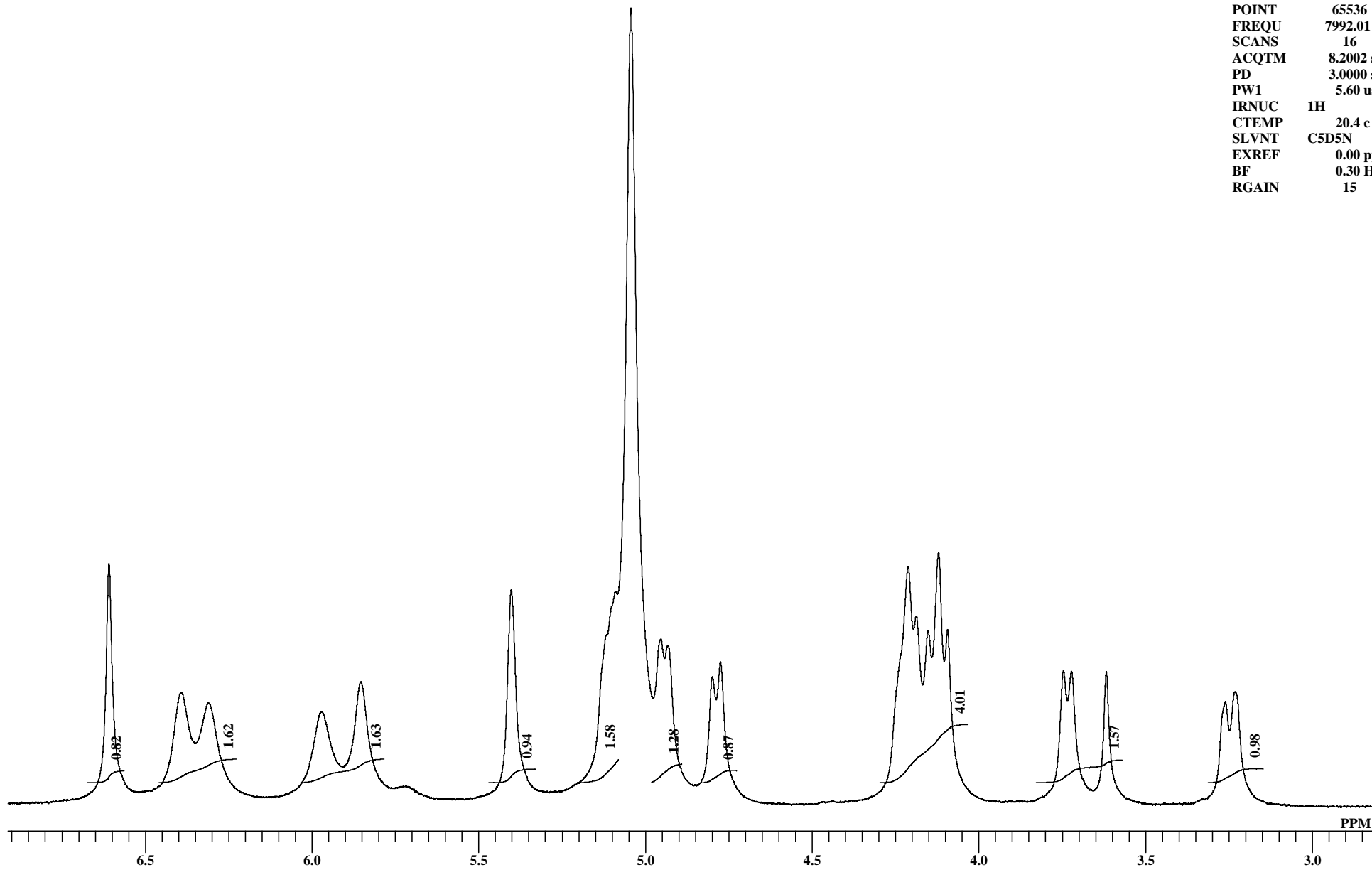
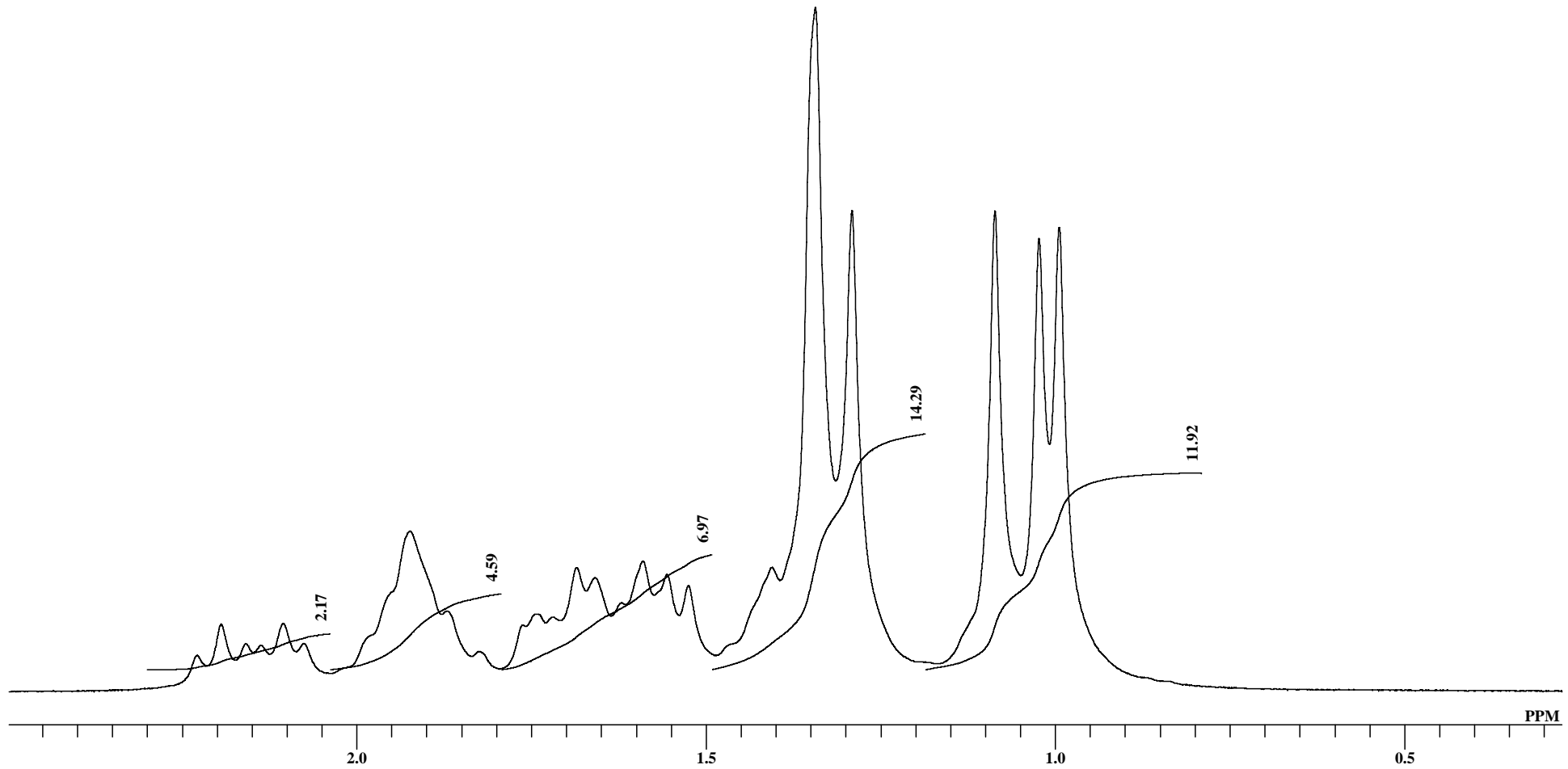


OBNUC 1H
EXMOD NON
OBFRQ 399.65 MHz
OBSET 124.00 KHz
OBFIN 10500.00 Hz
POINT 65536
FREQU 7992.01 Hz
SCANS 16
ACQTM 8.2002 sec
PD 3.0000 sec
PW1 5.60 usec
IRNUC 1H
CTEMP 20.4 c
SLVNT C5D5N
EXREF 0.00 ppm
BF 0.30 Hz
RGAIN 15



K V Natural Ingredients Pvt. Ltd
Gymnemagenin 1H NMR C5D5N

OBNUC 1H
EXMOD NON
OBFRQ 399.65 MHz
OBSET 124.00 KHz
OBFIN 10500.00 Hz
POINT 65536
FREQU 7992.01 Hz
SCANS 16
ACQTM 8.2002 sec
PD 3.0000 sec
PW1 5.60 usec
IRNUC 1H
CTEMP 20.4 c
SLVNT C5D5N
EXREF 0.00 ppm
BF 0.30 Hz
RGAIN 15



PEAK 41
 MXINT 21.4464626
 RESOL 0.1219484 HZ
 RESOL 0.0003050 PPM
 EXREF 0.0000000 PPM
 OBS -8027.86 HZ
 ABOBS 399784.5000000 KHZ
 NGAIN 1

NO.	PPM	INT(%)	FREQU(HZ)	J(HZ)	POSITION	BAR GRAPH
1	7.58657	48.67349	3032.978	-----	24428	+++++++
2	7.41605	10.13734	2964.808	68.169	24987	++
3	6.60923	16.80161	2642.255	322.553	27632	+++
4	6.39418	7.68976	2556.281	85.974	28337	+
5	6.31060	6.94496	2522.868	33.414	28611	+
6	5.97048	6.32781	2386.895	135.972	29726	+
7	5.85335	8.44993	2340.067	46.828	30110	+
8	5.40251	14.97464	2159.827	180.240	31588	++
9	4.95410	11.45177	1980.563	179.264	33058	++
10	4.93305	10.99873	1972.149	8.414	33127	++
11	4.79884	8.79297	1918.492	53.657	33567	+
12	4.77505	9.83289	1908.980	9.512	33645	++
13	4.21317	16.56332	1684.351	224.629	35487	+++
14	4.18816	13.09121	1674.351	10.000	35569	++
15	4.15277	12.05656	1660.205	14.146	35685	++
16	4.12135	17.57789	1647.644	12.561	35788	+++
17	4.09451	12.13513	1636.913	10.731	35876	++
18	3.74646	9.23736	1497.770	139.143	37017	+
19	3.72267	9.15263	1488.258	9.512	37095	+
20	3.61804	9.14908	1446.429	41.828	37438	+
21	3.26145	7.03175	1303.872	142.558	38607	+
22	3.23308	7.73018	1292.531	11.341	38700	+
23	2.22921	4.99955	891.199	401.332	41991	
24	2.19443	9.57532	877.296	13.902	42105	+
25	2.15966	6.70824	863.394	13.902	42219	+
26	2.13739	6.47601	854.492	8.902	42292	+
27	2.10628	9.69004	842.053	12.439	42394	+
28	2.07669	6.73009	830.224	11.829	42491	+
29	1.92417	23.23742	769.250	60.974	42991	++++
30	1.74542	11.06976	697.788	71.462	43577	++
31	1.68563	17.88994	673.887	23.902	43773	+++
32	1.65971	16.39712	663.521	10.366	43858	+++
33	1.59107	18.83826	636.083	27.438	44083	+++
34	1.55630	16.87322	622.181	13.902	44197	+++
35	1.52549	15.21928	609.864	12.317	44298	+++
36	1.40561	17.89865	561.938	47.926	44691	+++
37	1.34399	100.00000	537.304	24.634	44893	+++++
38	1.29153	70.24954	516.329	20.975	45065	+++++
39	1.08685	70.21787	434.502	81.827	45736	+++++
40	1.02370	66.16353	409.259	25.243	45943	+++++
41	0.99503	67.77490	397.796	11.463	46037	+++++