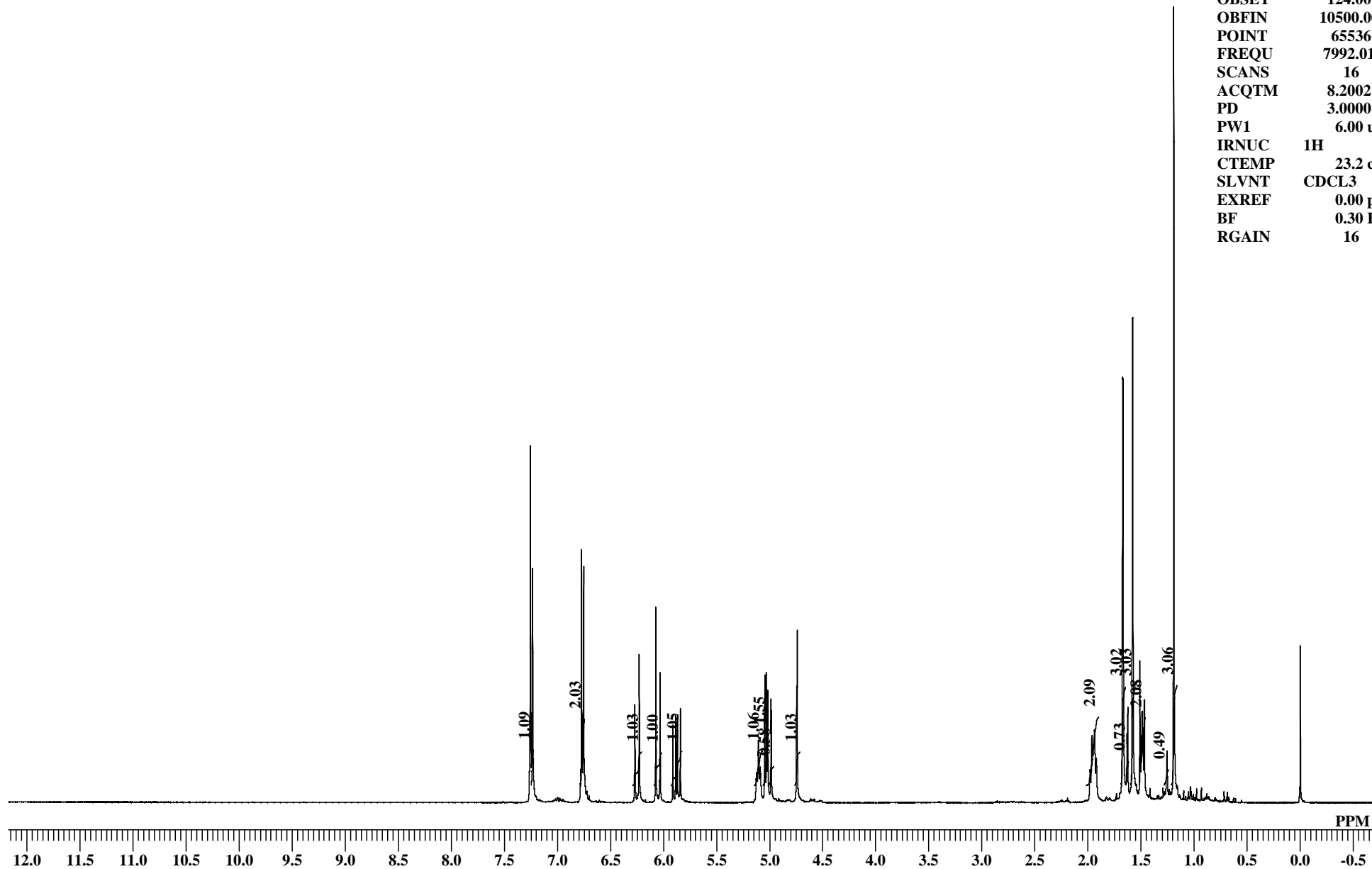
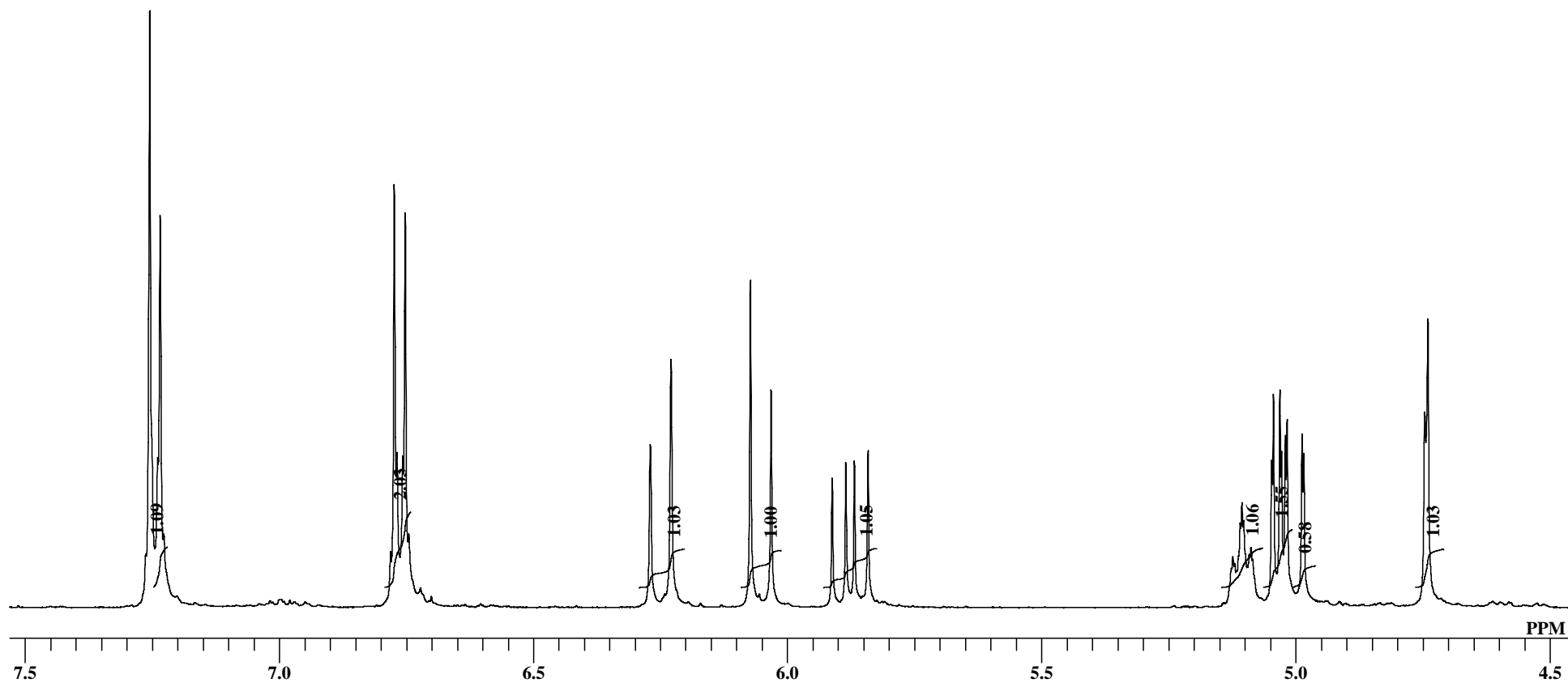


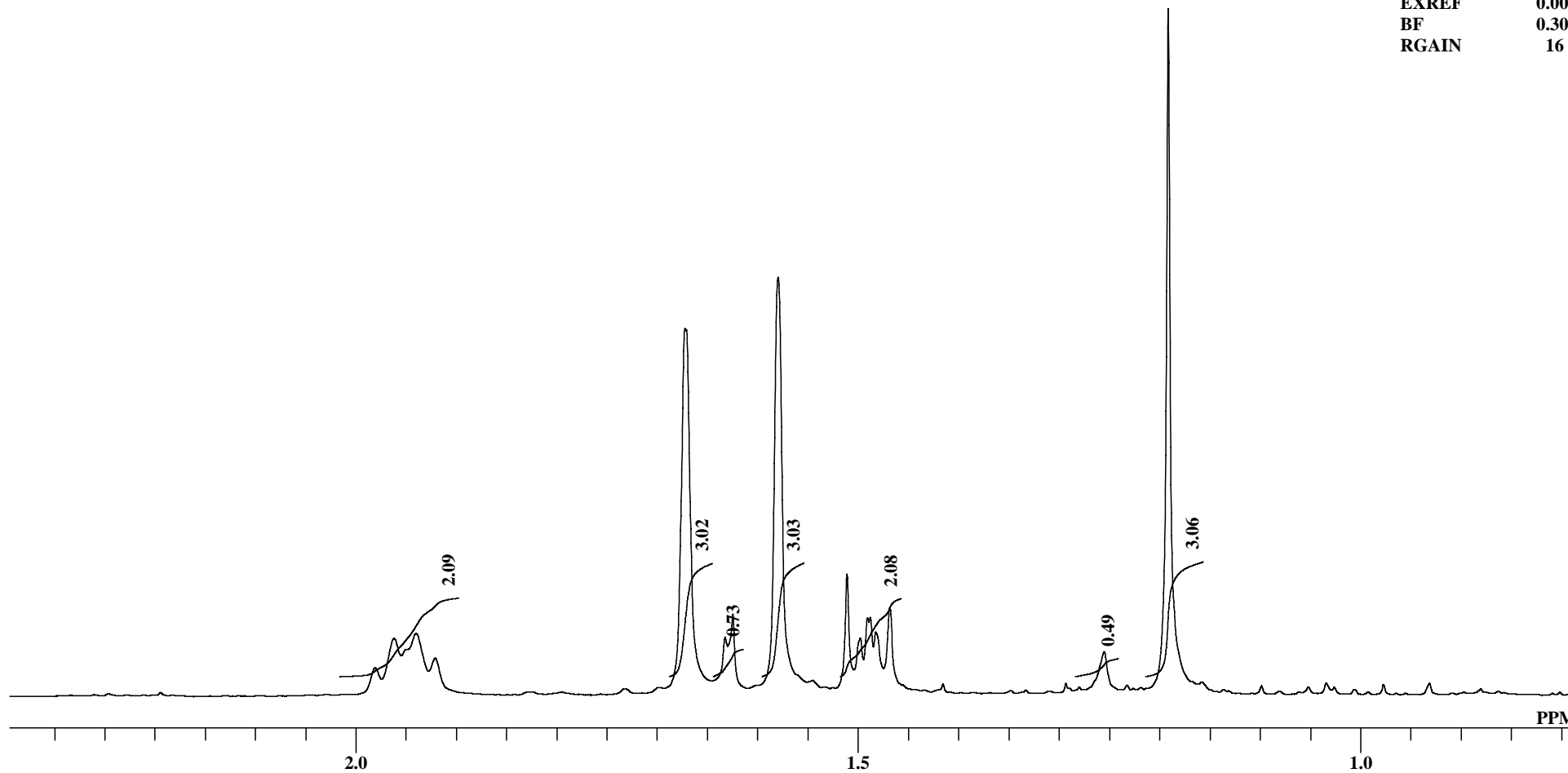
OBNUC 1H
EXMOD NON
OBFRQ 399.65 MHz
OBSET 124.00 KHz
OBFIN 10500.00 Hz
POINT 65536
FREQU 7992.01 Hz
SCANS 16
ACQTM 8.2002 sec
PD 3.0000 sec
PW1 6.00 usec
IRNUC 1H
CTEMP 23.2 c
SLVNT CDCL3
EXREF 0.00 ppm
BF 0.30 Hz
RGAIN 16



OBNUC 1H
EXMOD NON
OBFRQ 399.65 MHz
OBSET 124.00 KHz
OBFIN 10500.00 Hz
POINT 65536
FREQU 7992.01 Hz
SCANS 16
ACQTM 8.2002 sec
PD 3.0000 sec
PW1 6.00 usec
IRNUC 1H
CTEMP 23.2 c
SLVNT CDCL3
EXREF 0.00 ppm
BF 0.30 Hz
RGAIN 16



OBNUC 1H
EXMOD NON
OBFRQ 399.65 MHz
OBSET 124.00 KHz
OBFIN 10500.00 Hz
POINT 65536
FREQU 7992.01 Hz
SCANS 16
ACQTM 8.2002 sec
PD 3.0000 sec
PW1 6.00 usec
IRNUC 1H
CTEMP 23.2 c
SLVNT CDCL3
EXREF 0.00 ppm
BF 0.30 Hz
RGAIN 16



PEAK 48
 MXINT 126.1557999
 RESOL 0.1219484 HZ
 RESOL 0.0003050 PPM
 EXREF 0.0000000 PPM
 OBS -7975.91 HZ
 ABOBS 399784.5000000 KHZ
 NGAIN 1

NO.	PPM	INT(%)	FREQU(HZ)	J(HZ)	POSITION	BAR GRAPH
1	7.23944	11.22743	2894.200	-----	25353	++
2	7.23456	29.41406	2892.249	1.951	25369	+++++
3	7.22754	5.49761	2889.444	2.805	25392	+
4	6.77395	31.73800	2708.107	181.337	26879	+++++
5	6.76877	11.59285	2706.034	2.073	26896	++
6	6.75748	11.32537	2701.522	4.512	26933	++
7	6.75229	29.64131	2699.449	2.073	26950	+++++
8	6.27003	12.22909	2506.649	192.800	28531	++
9	6.22946	18.59932	2490.429	16.219	28664	+++
10	6.07328	24.55521	2427.992	62.438	29176	++++
11	6.03271	16.31475	2411.773	16.219	29309	+++
12	5.91222	9.66756	2363.603	48.170	29704	+
13	5.88538	10.88348	2352.872	10.731	29792	++
14	5.86860	10.95898	2346.164	6.707	29847	++
15	5.84176	11.75846	2335.433	10.731	29935	++
16	5.12401	3.75710	2048.489	286.944	32288	
17	5.12065	3.29199	2047.147	1.341	32299	
18	5.10937	6.29607	2042.635	4.512	32336	+
19	5.10601	7.82805	2041.294	1.341	32347	+
20	5.10265	6.47507	2039.952	1.341	32358	+
21	5.09167	3.98572	2035.562	4.390	32394	
22	5.08832	4.46342	2034.221	1.341	32405	
23	5.04744	11.00272	2017.879	16.341	32539	++
24	5.04409	15.98008	2016.538	1.341	32550	+++
25	5.03128	16.29274	2011.416	5.122	32592	+++
26	5.02823	11.69078	2010.197	1.219	32602	++
27	5.02060	12.89093	2007.148	3.049	32627	++
28	5.01724	14.07636	2005.807	1.341	32638	++
29	4.98766	12.98364	1993.978	11.829	32735	++
30	4.98461	11.52870	1992.758	1.219	32745	++
31	4.74637	14.65027	1897.516	95.242	33526	++
32	4.74027	21.65165	1895.077	2.439	33546	++++
33	1.98091	4.10806	791.933	1103.145	42592	
34	1.96200	8.40906	784.372	7.561	42654	+
35	1.94003	9.11916	775.592	8.780	42726	+
36	1.92112	5.51343	768.031	7.561	42788	+
37	1.67252	53.47343	668.643	99.388	43603	+++++
38	1.63256	8.61535	652.668	15.975	43734	+
39	1.62493	11.93181	649.619	3.049	43759	++
40	1.57979	60.94066	631.571	18.048	43907	+++++
41	1.51085	17.77527	604.010	27.560	44133	+++
42	1.49773	8.40193	598.766	5.244	44176	+
43	1.49071	11.37165	595.962	2.805	44199	++
44	1.48797	11.43823	594.864	1.098	44208	++
45	1.48248	9.34054	592.669	2.195	44226	+
46	1.46845	12.89404	587.059	5.610	44272	++

47	1.25492	6.47402	501.696	85.364	44972	+
48	1.19147	100.00000	476.330	25.365	45180	+++++