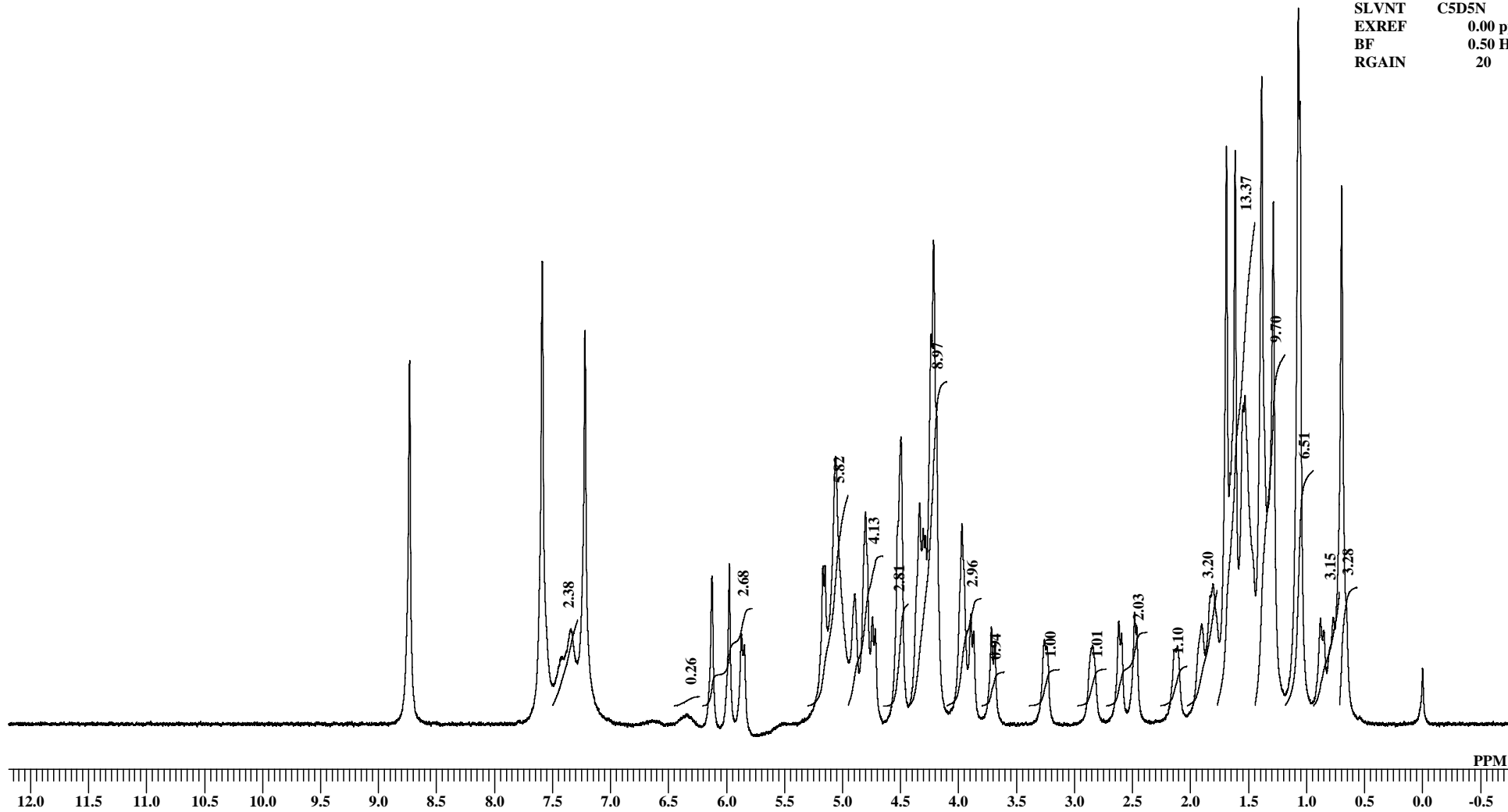
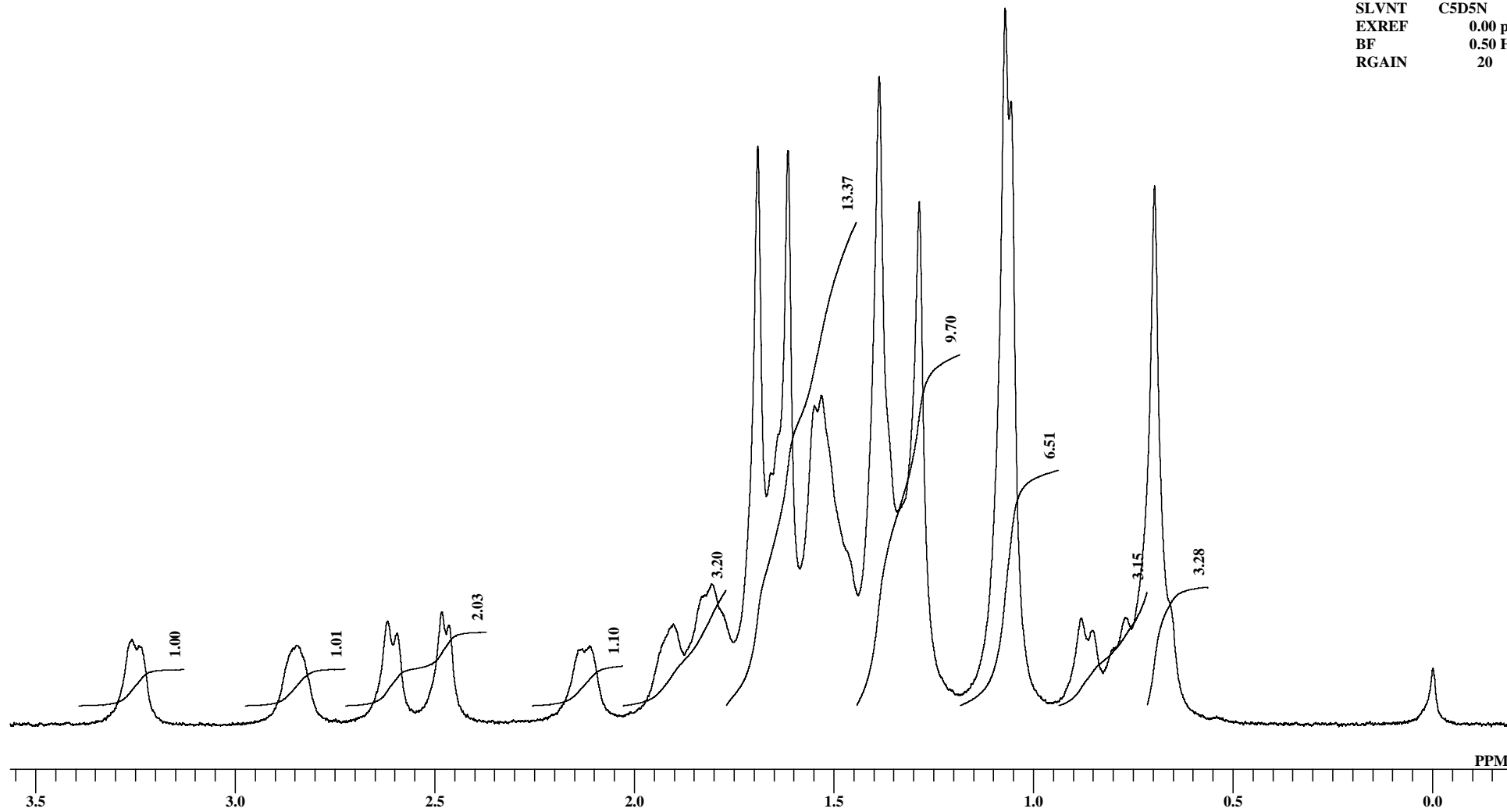


OBNUC 1H
EXMOD NON
OBFRQ 399.65 MHz
OBSET 124.00 KHz
OBFIN 10500.00 Hz
POINT 65536
FREQU 7992.01 Hz
SCANS 32
ACQTM 8.2002 sec
PD 3.0000 sec
PW1 5.60 usec
IRNUC 1H
CTEMP 22.4 c
SLVNT C5D5N
EXREF 0.00 ppm
BF 0.50 Hz
RGAIN 20



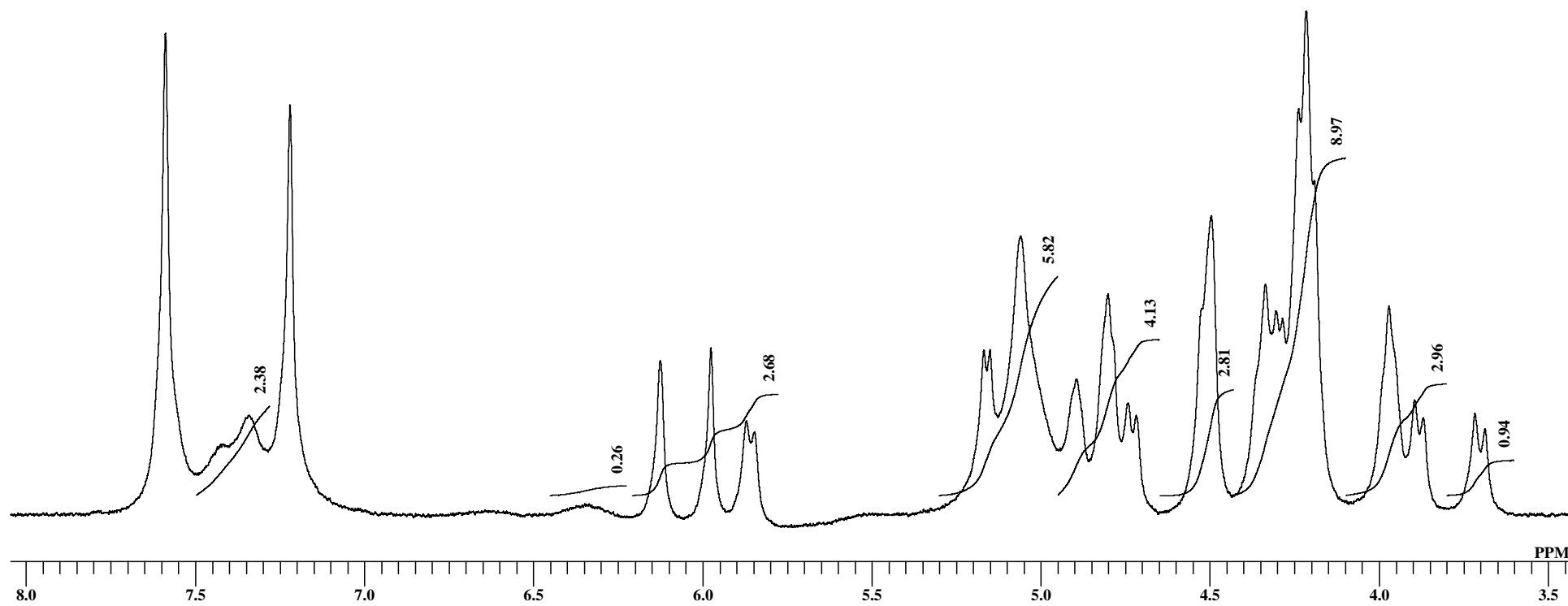
K V Natural Ingredients Pvt. Ltd
Bacopa Saponin C 1H NMR C5D5N

OBNUC 1H
EXMOD NON
OBFRQ 399.65 MHz
OBSET 124.00 KHz
OBFIN 10500.00 Hz
POINT 65536
FREQU 7992.01 Hz
SCANS 32
ACQTM 8.2002 sec
PD 3.0000 sec
PW1 5.60 usec
IRNUC 1H
CTEMP 22.4 c
SLVNT C5D5N
EXREF 0.00 ppm
BF 0.50 Hz
RGAIN 20



K V Natural Ingredients Pvt. Ltd
Bacopa Saponin C 1H NMR C5D5N

OBNUC 1H
EXMOD NON
OBFRQ 399.65 MHz
OBSET 124.00 KHz
OBFIN 10500.00 Hz
POINT 65536
FREQU 7992.01 Hz
SCANS 32
ACQTM 8.2002 sec
PD 3.0000 sec
PW1 5.60 usec
IRNUC 1H
CTEMP 22.4 c
SLVNT C5D5N
EXREF 0.00 ppm
BF 0.50 Hz
RGAIN 20



PEAK 37
 MXINT 11.4343348
 RESOL 0.1219484 HZ
 RESOL 0.0003050 PPM
 EXREF 0.0000000 PPM
 OBS -8032.01 HZ
 ABOBS 399784.5000000 KHZ
 NGAIN 1

NO.	PPM	INT(%)	FREQU(HZ)	J(HZ)	POSITION	BAR GRAPH
1	7.34346	13.31913	2935.785	-----	25242	++
2	6.36551	1.04350	2544.818	390.966	28448	
3	6.12575	20.62800	2448.967	95.851	29234	++++
4	5.97598	22.36501	2389.090	59.877	29725	++++
5	5.87104	12.56889	2347.140	41.950	30069	++
6	5.16824	22.02378	2066.171	280.969	32373	++++
7	5.15085	22.10485	2059.220	6.951	32430	++++
8	5.05995	37.37143	2022.879	36.341	32728	+++++++
9	4.89493	18.19491	1956.905	65.974	33269	+++
10	4.80158	29.62931	1919.589	37.316	33575	+++++
11	4.74210	14.95375	1895.809	23.780	33770	++
12	4.71800	13.29080	1886.175	9.634	33849	++
13	4.49655	40.12232	1797.641	88.535	34575	+++++++
14	4.33610	30.90861	1733.496	64.145	35101	+++++
15	4.30468	27.35139	1720.935	12.561	35204	+++++
16	4.21561	67.59786	1685.326	35.609	35496	+++++++
17	3.97127	27.97114	1587.646	97.681	36297	+++++
18	3.89562	15.38841	1557.402	30.243	36545	+++
19	3.86939	12.98934	1546.915	10.488	36631	++
20	3.71657	13.55358	1485.819	61.096	37132	++
21	3.68728	11.49804	1474.112	11.707	37228	++
22	3.25901	11.82577	1302.896	171.215	38632	++
23	2.84691	11.03020	1138.144	164.752	39983	++
24	2.61813	14.39211	1046.683	91.461	40733	++
25	2.48239	15.66393	992.416	54.267	41178	+++
26	2.11268	10.90040	844.614	147.801	42390	++
27	1.90282	13.94254	760.714	83.900	43078	++
28	1.80765	19.55579	722.666	38.048	43390	+++
29	1.69112	80.73285	676.082	46.584	43772	+++++++
30	1.61547	80.12541	645.839	30.243	44020	+++++++
31	1.53098	45.90937	612.059	33.780	44297	+++++++
32	1.38700	90.41737	554.499	57.560	44769	+++++++
33	1.28634	72.91867	514.256	40.243	45099	+++++++
34	1.07129	100.00000	428.283	85.974	45804	+++++++
35	1.05634	86.96870	422.307	5.975	45853	+++++++
36	0.88156	14.80357	352.431	69.876	46426	++
37	0.69701	75.18100	278.652	73.779	47031	+++++++