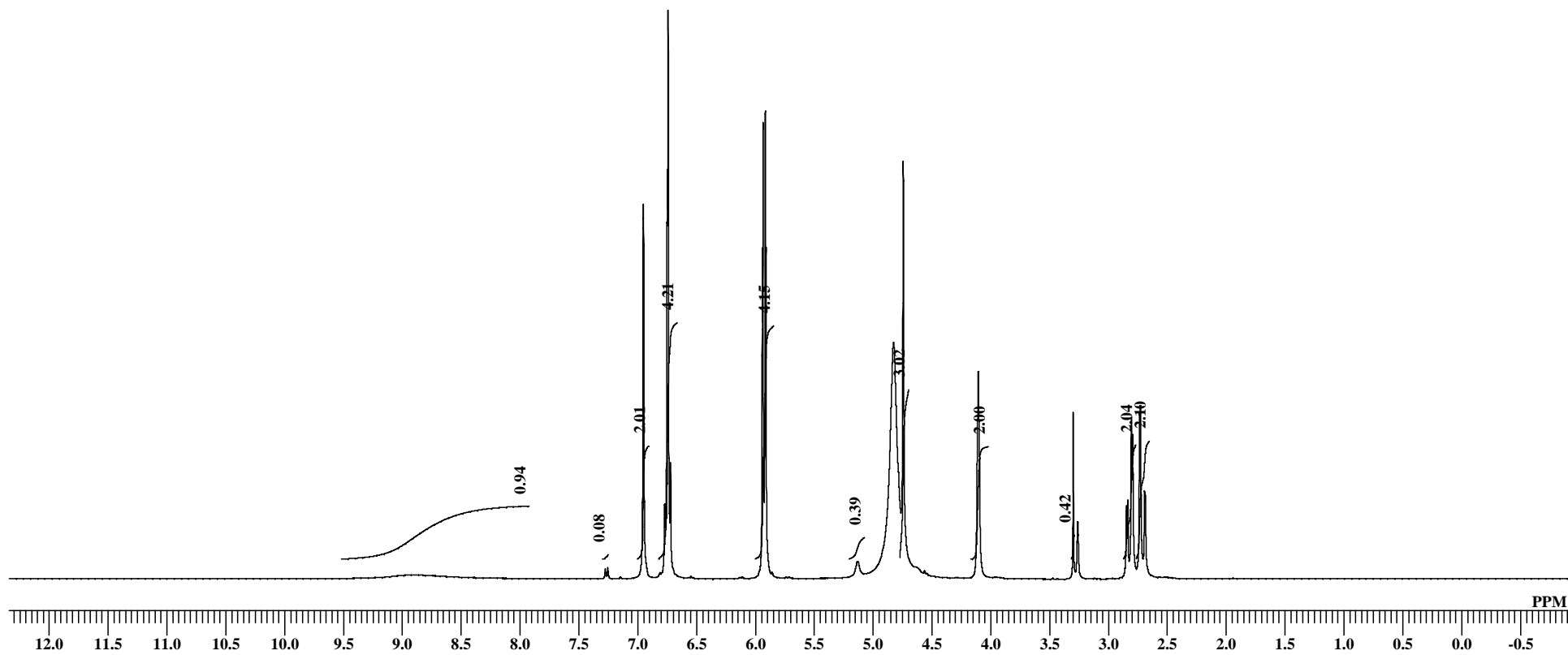
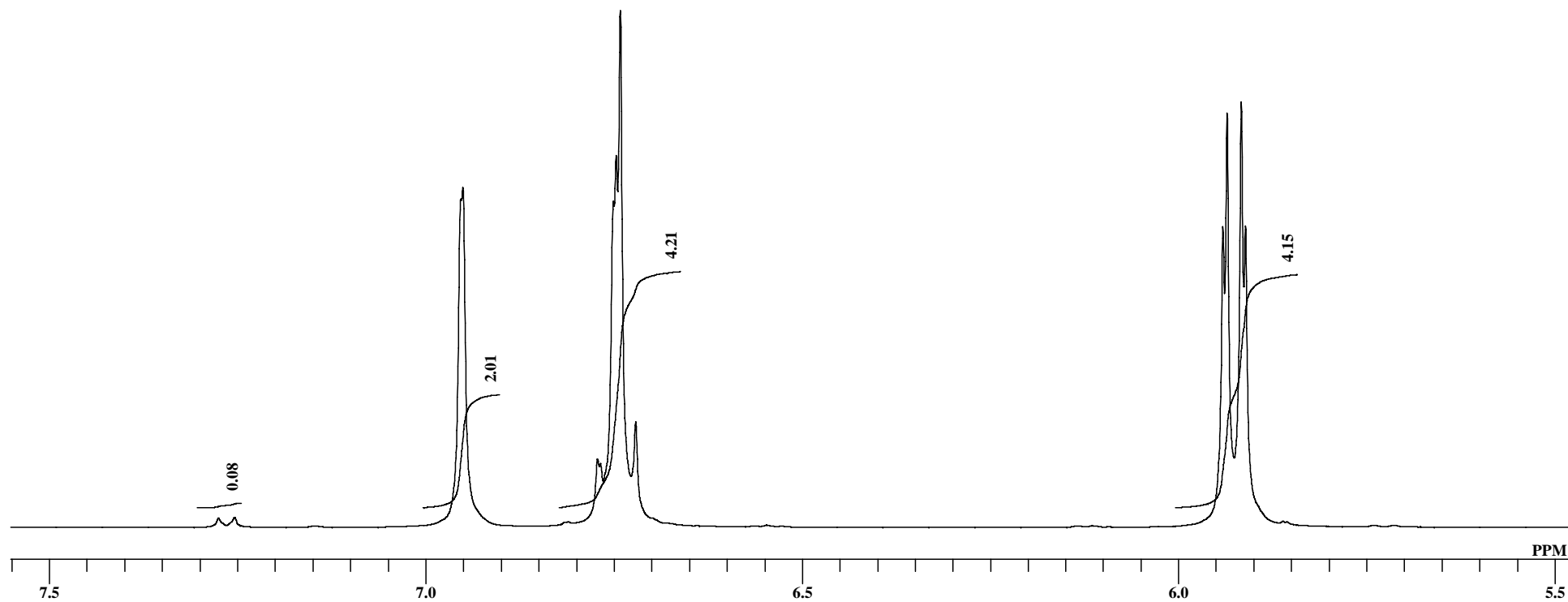


K V Natural Ingredients Pvt. Ltd.
Epicatechin 1H NMR CD3OD

OBNUC 1H
EXMOD NON
OBFRQ 399.65 MHz
OBSET 124.00 KHz
OBFIN 10500.00 Hz
POINT 65536
FREQU 7992.01 Hz
SCANS 16
ACQTM 8.2002 sec
PD 3.0000 sec
PW1 5.60 usec
IRNUC 1H
CTEMP 15.6 c
SLVNT CD3OD
EXREF 3.30 ppm
BF 0.30 Hz
RGAIN 9

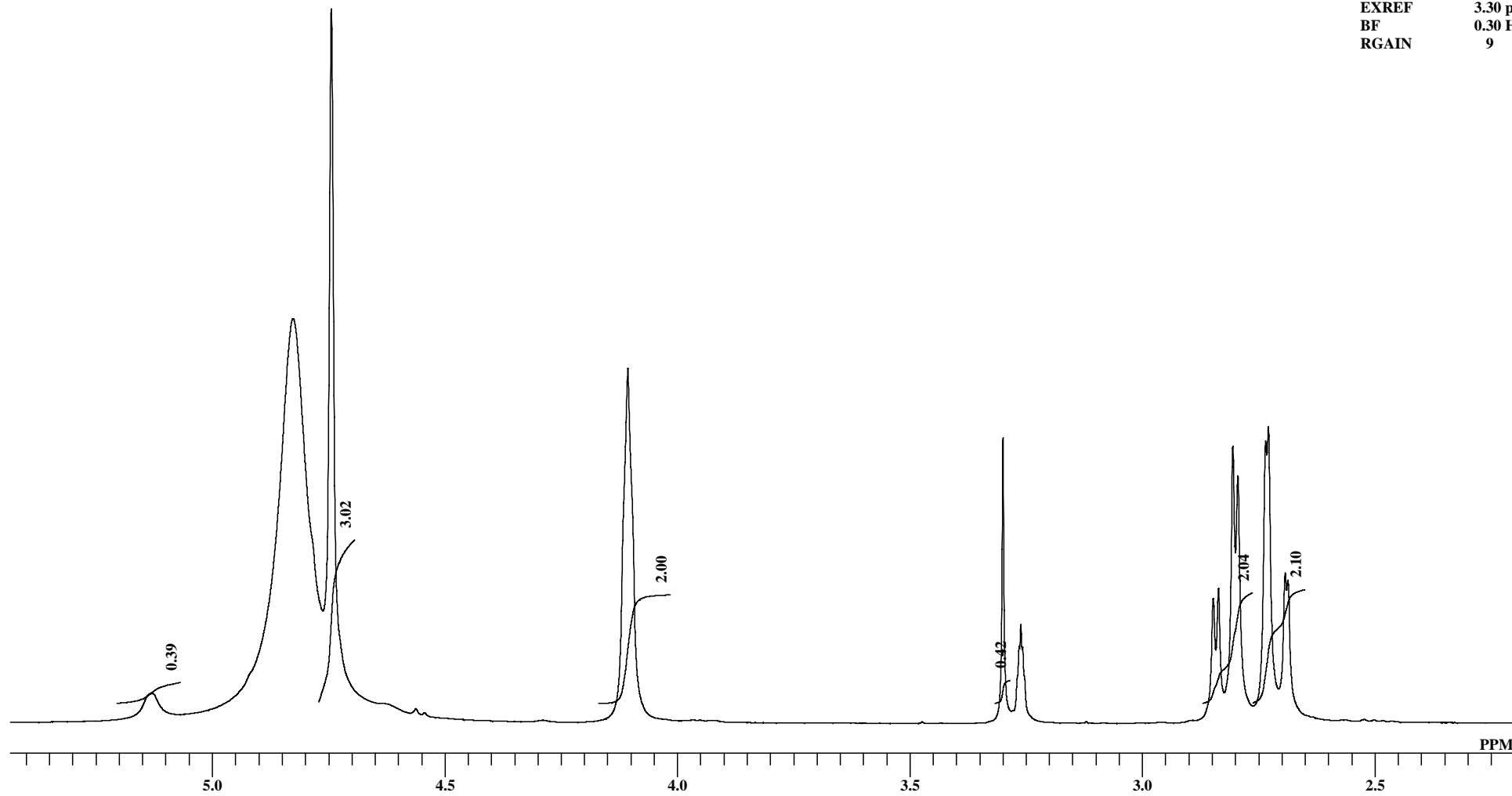


OBNUC 1H
EXMOD NON
OBFRQ 399.65 MHz
OBSET 124.00 KHz
OBFIN 10500.00 Hz
POINT 65536
FREQU 7992.01 Hz
SCANS 16
ACQTM 8.2002 sec
PD 3.0000 sec
PW1 5.60 usec
IRNUC 1H
CTEMP 15.6 c
SLVNT CD3OD
EXREF 3.30 ppm
BF 0.30 Hz
RGAIN 9



K V Natural Ingredients Pvt. Ltd.
Epicatechin 1H NMR CD3OD

OBNUC 1H
EXMOD NON
OBFRQ 399.65 MHz
OBSET 124.00 KHz
OBFIN 10500.00 Hz
POINT 65536
FREQU 7992.01 Hz
SCANS 16
ACQTM 8.2002 sec
PD 3.0000 sec
PW1 5.60 usec
IRNUC 1H
CTEMP 15.6 c
SLVNT CD3OD
EXREF 3.30 ppm
BF 0.30 Hz
RGAIN 9



Sat Apr 14 15:12:44 2012

PEAK 26
MXINT 45.0243835
RESOL 0.1219484 HZ
RESOL 0.0003050 PPM
EXREF 3.3000000 PPM
OBS -6628.18 HZ
ABOBS 399784.5000000 KHZ
NGAIN 1

NO.	PPM	INT(%)	FREQU(HZ)	J(HZ)	POSITION	BAR GRAPH
1	8.88553	0.60927	3552.279	-----	19840	
2	7.27554	1.71174	2908.635	643.643	25118	
3	7.25419	1.89261	2900.099	8.536	25188	
4	6.95098	65.81898	2778.882	121.217	26182	+++++
5	6.77193	13.16592	2707.299	71.584	26769	++
6	6.76827	12.34399	2705.835	1.463	26781	++
7	6.75119	63.08390	2699.006	6.829	26837	+++++
8	6.74722	71.98891	2697.421	1.585	26850	+++++
9	6.74173	100.00000	2695.226	2.195	26868	+++++
10	6.72129	20.36587	2687.055	8.171	26935	++++
11	5.94101	58.16058	2375.111	311.944	29493	+++++
12	5.93552	80.20678	2372.916	2.195	29511	+++++
13	5.91661	82.28096	2365.355	7.561	29573	+++++
14	5.91111	58.28731	2363.160	2.195	29591	+++++
15	5.13083	3.00891	2051.216	311.944	32149	
16	4.74404	73.44184	1896.586	154.631	33417	+++++
17	4.10652	36.41263	1641.714	254.872	35507	+++++
18	3.30000	29.28403	1319.282	322.431	38151	+++++
19	2.84794	12.77985	1138.555	180.727	39633	++
20	2.83665	13.76535	1134.043	4.512	39670	++
21	2.80584	28.40755	1121.726	12.317	39771	+++++
22	2.79486	25.35367	1117.336	4.390	39807	+++++
23	2.73538	28.97894	1093.556	23.780	40002	+++++
24	2.72928	30.44241	1091.117	2.439	40022	+++++
25	2.69328	15.39066	1076.727	14.390	40140	+++
26	2.68749	14.65536	1074.410	2.317	40159	++